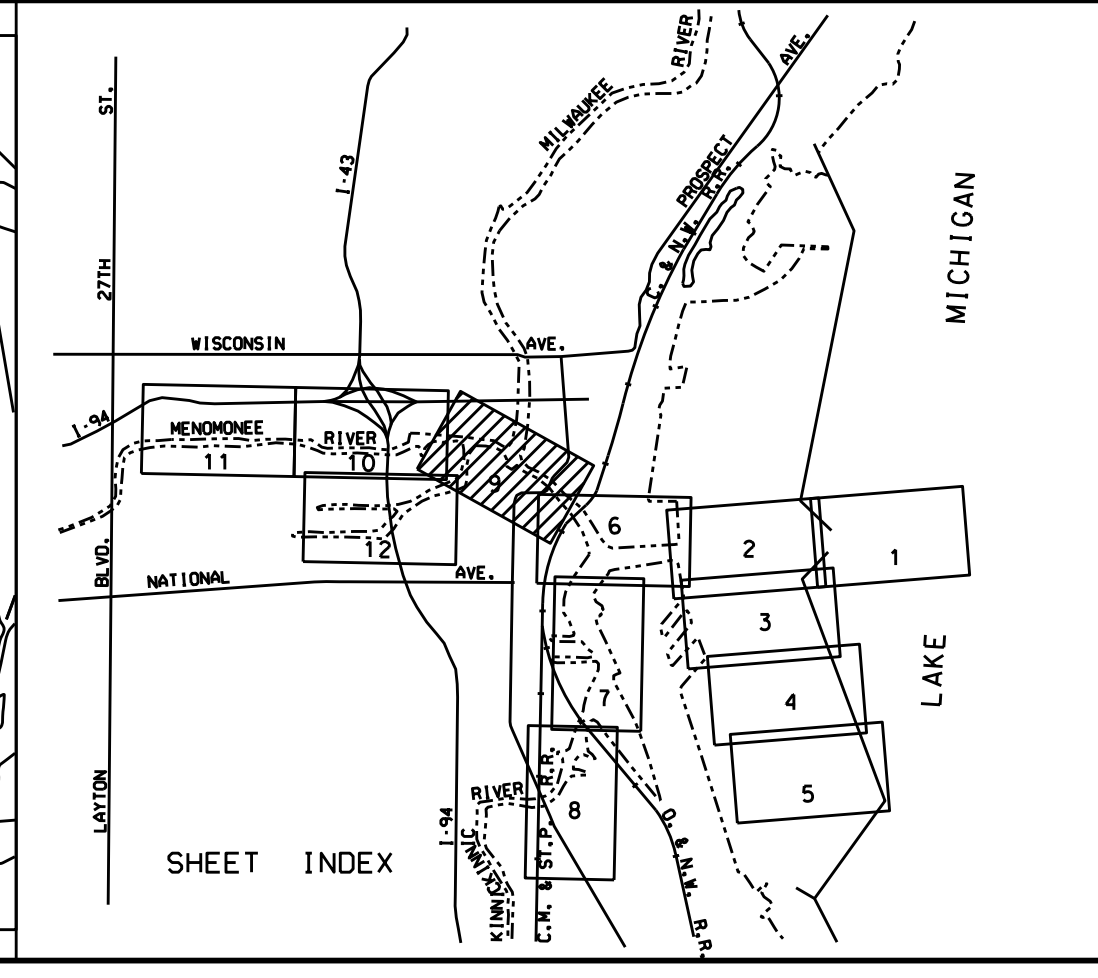
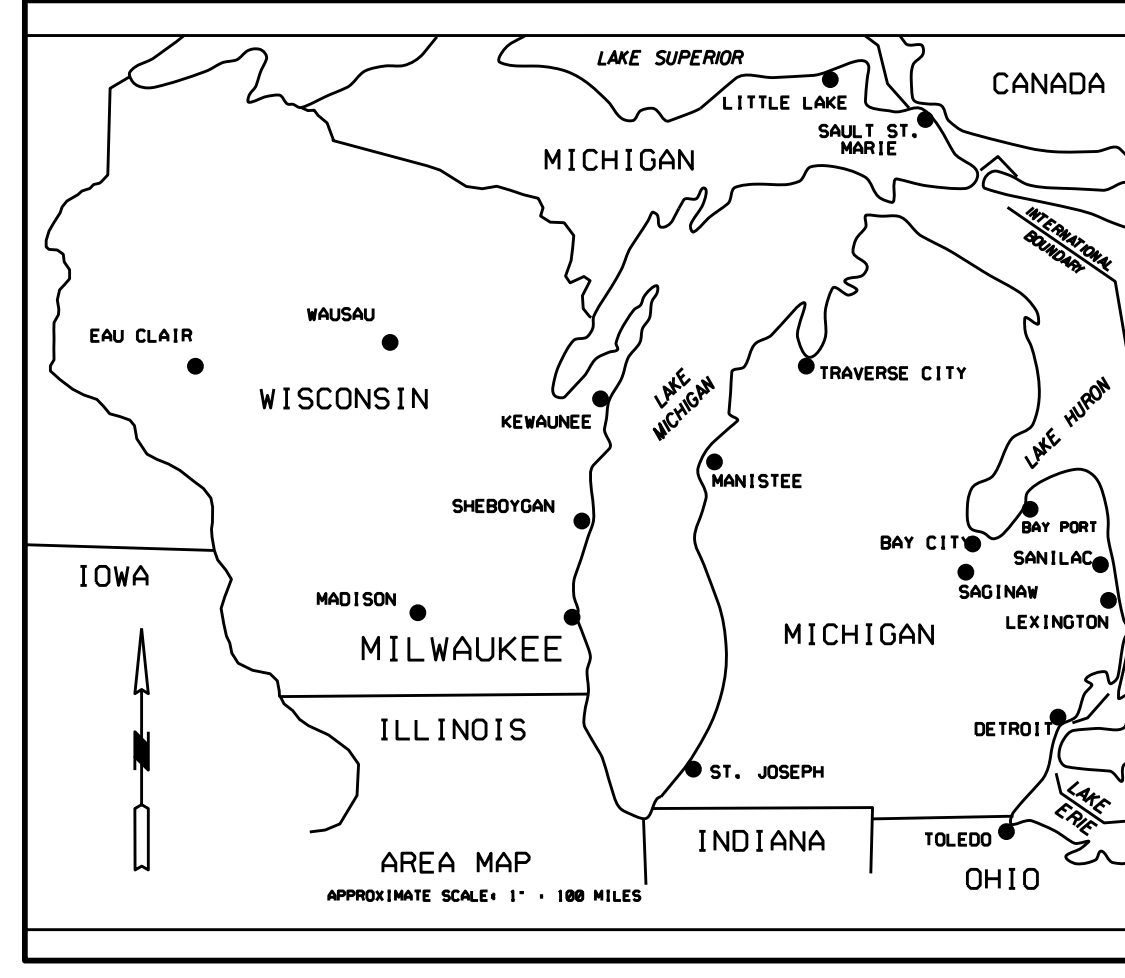


COORDINATE TABLE		
STA.	DESCRIPTION	COORDINATES
		NORTHING EASTING
111	CHANN. P.T.	382090.418 2528483.322
112	00.	382532.012 2527968.899
113	00.	382568.192 2528173.222
114	00.	382590.161 2527956.882
115	00.	382643.159 2528078.485
116	00.	382451.521 2527857.586
117	00.	382541.147 2527902.038
118	00.	382468.316 2527984.575
120	00.	382596.131 2527877.305
121	00.	382751.210 2527294.853
122	00.	382884.068 2527315.151
123	00.	382780.200 2527285.038
124	00.	382884.047 2527445.124
125	00.	382839.632 2527192.351
126	00.	382904.533 2527233.264
127	00.	382835.880 2527142.496
129	00.	383160.652 2526843.376
131	00.	383254.986 2526653.946
132	00.	383177.111 2527153.059
133	00.	383281.210 2526292.358
135	00.	383714.745 2527024.342
136	00.	383680.427 2527235.038
301	00.	383281.037 2526109.376
303	00.	383500.376 2526516.218
304	00.	383544.898 2526549.174
305	00.	383286.061 2526489.857
306	00.	383416.437 2526477.512
308	00.	383411.500 2526168.124
309	00.	383458.960 2525755.569
311	00.	383494.966 2525109.163
312	00.	383534.959 2525108.663
314	00.	383463.185 2525099.611
315	00.	383298.146 2525098.202
316	00.	383461.235 2525009.639
317	00.	383295.998 2524998.233
318	00.	383532.848 2524990.948
320	00.	383548.695 2524537.707
321	00.	383191.010 2524415.566
401	00.	383349.583 2526044.916
402	00.	383483.953 2525780.103
403	00.	383270.020 2525917.519
405	00.	383176.324 2525866.070
406	00.	382638.452 2525797.164
407	00.	382557.388 2525883.896
408	00.	382620.499 2525505.613
409	00.	382165.827 2525272.676
410	00.	382274.914 2525186.093
E	CENTERLINE PT.	387410.497 2528863.715
F	00.	382332.600 2528176.325
G	00.	382554.617 2527799.061
H	00.	382832.124 2527315.095
I	00.	382891.112 2527212.807
J	00.	383138.683 2527032.638
K	00.	383093.586 2527179.690
MJ	00.	383138.683 2527032.638
NK	00.	383207.810 2526848.662
OL	00.	383001.851 2526064.474
UM	00.	383500.125 2525919.016
VO	00.	383493.676 2525098.907
WD	00.	383493.170 2524983.335
WE	00.	383228.170 2524400.609
SM	00.	383000.125 2525819.016
SH	00.	382412.584 2525842.688
SO	00.	382200.369 2525293.388



LEGEND

- ▲ GPS CONTROL MONUMENT
- △ BRONZE OR BRASS DISC
- CHANNEL LINE TURNING POINT

THE SURVEY SHOWN ABOVE WAS CONDUCTED BY THE LAKE MICHIGAN AREA OFFICE, KEWAUNEE SUB OFFICE SURVEY PARTY ON 17 NOVEMBER 2011 (119+00-142+28 AND 339+00-357+00) AND 06 DECEMBER 2011 (551+00-566+00), USING GPS POSITIONING, AN INERSPACE 448 SOUNDER, AND A HYPACK HYDROGRAPHIC SURVEY SYSTEM.

NOTES:

SURVEY CONTROL AND BENCH MARK DATA IS AVAILABLE FROM THE DETROIT DISTRICT, ENGINEERING & TECHNICAL SERVICES, OPERATIONS TECHNICAL SUPPORT BRANCH, LAKE MICHIGAN AREA OFFICE, KEWAUNEE SUB OFFICE.

THE COORDINATE GRID SYSTEM SHOWN IS REFERENCED TO THE WISCONSIN STATE PLANE COORDINATE SYSTEM, LAMBERT PROJECTION, SOUTH ZONE (4803), NORTH AMERICAN DATUM 1983 (NAD83), US FOOT.

ALL SOUNDINGS ARE IN FEET AND ARE REFERENCED TO LOW WATER DATUM ELEVATION, 577.5 FEET ABOVE MEAN WATER LEVEL AT RIMOUSKI, QUEBEC (INTERNATIONAL GREAT LAKES DATUM 1985).

THE INFORMATION DEPICTED ON THIS MAP REPRESENTS THE RESULTS OF SURVEYS MADE ON THE DATES INDICATED AND CAN ONLY BE CONSIDERED AS INDICATING THE GENERAL CONDITIONS AT THAT TIME.

PROJECT DEPTH FOR THIS AREA IS 21.0 FEET.

COMBINED GRID SCALE FACTOR = 0.99995330
GRID DIST. DIVIDED BY COMBINED GRID SCALE FACTOR = GROUND DIST.

1" = 100'

NO.	DATE	REVISION	BY
U.S. ARMY ENGINEER DISTRICT, DETROIT CORPS OF ENGINEERS DETROIT, MICHIGAN			
DRAWN BY K. J. K.		REVIEWED BY R. D. M.	
CHECKED BY A. R. M.		REVIEWED:	
SUBMITTED:		APPROVAL RECOMMENDED:	
APPROVED:		DATE:	
SCALE 1" = 100'		DRAWING NUMBER	
SHEET 9 OF 12		DRAWING NUMBER	

K.A.O.
45-C6
247
OBDEC11